

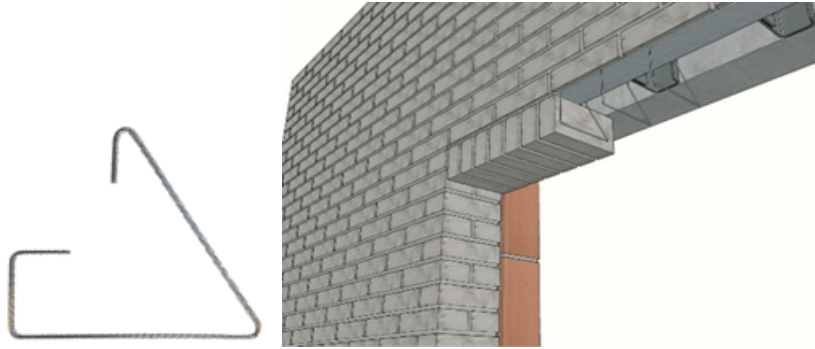
Roller layer brackets Type KR

Product description

For concealed installation of façade supports, rollaag brackets made of stainless steel AISI 304 are hung on the façade support. Depending on the type, we supply all types of rollaag brackets in stainless steel AISI 304 with a wire diameter of 3.4 mm.

Technical description

- Wire quality: Stainless steel AISI 304
- Wire diameter: 3.5 mm
- Available models: All models available



Range

Code	Height (mm)	Width (mm)	Packaging (pcs/box)
RLB-KR060	60 mm	80 mm	5x10
RLB-KR073	73 mm	80 mm	5x10
RLB-KR080	80 mm	80 mm	5x10
RLB-KR090	90 mm	80 mm	5x10
RLB-KR100	100 mm	80 mm	5x10
RLB-KR102	102 mm	80 mm	5x10
RLB-KR105	105 mm	80 mm	5x10
RLB-KR120	120 mm	80 mm	5x10
RLB-KR125	125 mm	80 mm	5x10
RLB-KR150	150 mm	80 mm	5x10
RLB-KR160	160 mm	80 mm	5x10
RLB-KR170	170 mm	80 mm	5x10

Custom dimensions available on request